

Edge Banding Machine with V-Belt&Double Gluing Units

NB7PCGM-PC

NichoMachines Machinery



Find more: www.nichomachines.com



3-year warranty*
ensuring no hassle
and unforeseen costs



Quick return on
investment



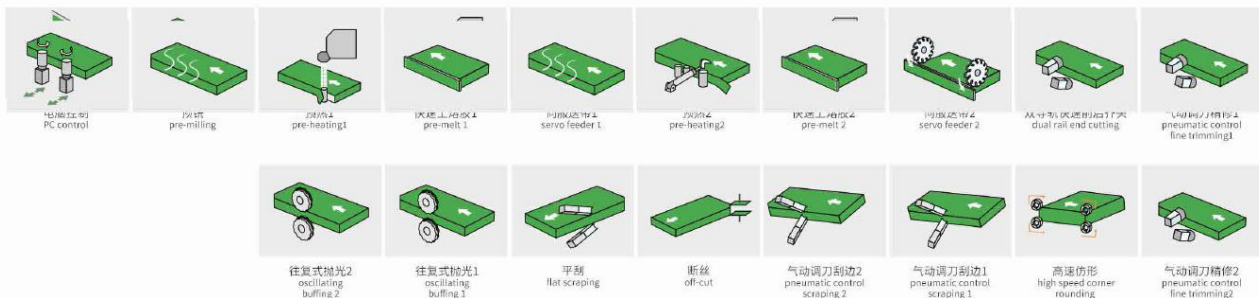
Low Total Cost of
Ownership



Ensuring low price
by sourcing cleverly
in large quantities

Description

Full functional units including PC control, pre-milling, pre-heating, pre-melt, 2 quick melt, 8 tapes changing system, dual rails for end trimming, auto tool adjustment by 2 fine trimming, 4 motors with tools for corner trimming, auto tool adjustment by 2 radius scraping, pneumatic flat scraping, 2 sets of oscillating buffing; Panels are evenly pressed by V-belt to maximize stability. With 2 glue units can change colors of glue faster, also auto edge tapes changing system can select any one fast from 4 thicknesses of edge tape; .Nesting kit design is friendly for pre-drilled parts, PC control.



Details

1. Machine body

- Heavy duty machine body is welded with thick laser-cut steel plates, then through processing of advanced CNC machine for metal work, hence enhance the stability and strength, reduce the vibration in the process; Machine net weight up to 6110kg-very heavy duty;

- Frame body pass the heat treatment and vibration aging treatment to guarantees the whole service life without deforming.

- After sandblasting and painting, the top-grade CNC metal processing machines are used to process the body and components to make sure perfect quality and detail.



2. Professional assembly line

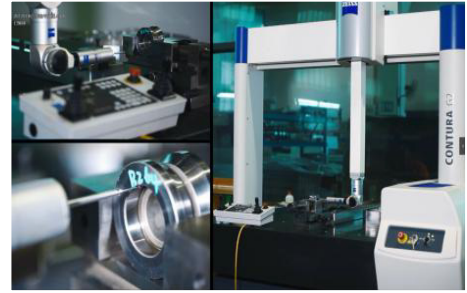
- Nanxing follows the SOP and set up the professional assembly lines. All the assembling is worked out by the experienced technicians that guarantee machine standardization and performance.



3. Quality control

- Advanced measuring equipment and strict QC system help to make sure the machines and parts are checked and certificated by very high standard.

- All the machines are delivered with Quality Certificate signed by QC specialist.



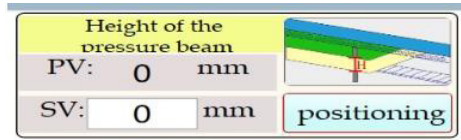
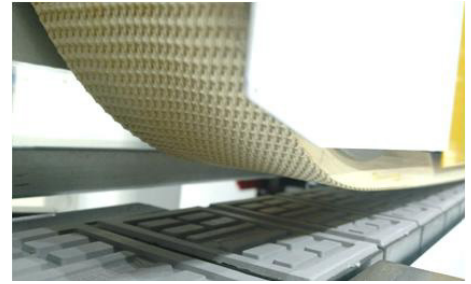
4. Conveyor

- ❑ Long straight semicircle guide rail is through hard treatment before installation, conveyor piece can perfectly contact with the guide rail, almost no gap;
- ❑ 2 sets of stretched support conveyor with compact rollers helps to support large work piece in the process which avoids the influence caused by unbalance of large work piece;
- ❑ Thick steel support plate of high rigidity and stability prevents the deformation, and offers extra stability during the banding work;
- ❑ The conveyor motor makes variable frequency starting possible, very stable and equipped with braking system. Easy to install or uninstall.



5. Top presser

- Fiber reinforced v-belt with groove on surface ensures smooth and stable conveying of workpiece but clean with no marks, resulting excellent edge banding quality.
- Pressure beam of heavy duty aluminum alloy in high stability enable pressure force to be allocated evenly from front to the end but without deformation.
- The height of pressure beam is able to adjust by electronic regulator, its movement driven by asynchronous motor, controlled by encoder that is available to operate in touch screen.



6. Support columns

- With high rigidity and strength, pressure beam and the whole machine could be fixed and adjusted firmly.



7. Release agent

- Spraying release agent on workpiece surface reduce the adhere of glue, result is cleaner

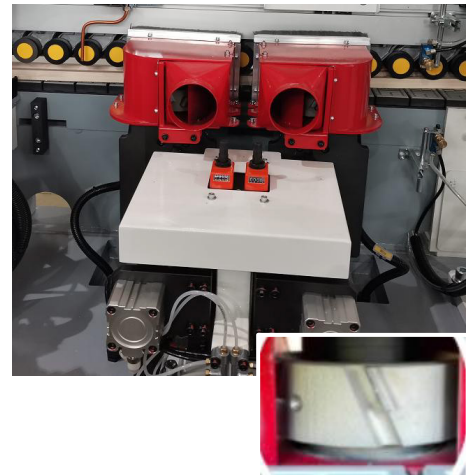


8. Pre-milling

- Pre-milling with diamond cutter $\phi 125 \times H63 \times \phi 30$ Z3+3 simply handle the work piece edge before gluing offers optimum basis of binding effect.
- Two motors controlled pneumatically, milling panel edge intermittent. $2 \times 3.7\text{kW}$ motors; 200Hz Rotating speed: 12,000 rpm.

Option

Axial angle pre-milling LEUCO cutter, paper lamination board friendly for smoother milling effect $125 \times 34 \times 30$ DKN8*3 Z3+3



9. 2 sets of pre-heating

- Warm the work piece edge, the glue could well melt during gluing, especially suitable for wet or cold zones.



10. 4 tapes Edge tape feeder by servo motor $\times 2$

- Compared with traditional edge tape feeder, higher trimming precision controlled by servo motor, cost saving up to RMB 20-50K per each machine due to shorter hanging out of tape at two ends. Standard machine has edge tape detector.
- Two sets of four tapes changing system make it easy to switch between two color glue, auto changing to next position if no tape in current storage that ensures the machine continuously working without stopping.



11. Snipping×2

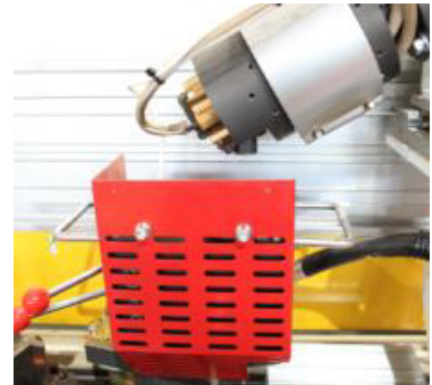
- Air cylinder with electric control switch of snipping unit is capable of mass production requirements.



12. 2 sets of gluing units

Quick-melt tank

- Heating up the glue by 2 sections reduces the heating time
- Glue particle dissolve device, the glue volume up to 820g~920g/min (parameter will change with different glue), when air pressure of pushing glue reaches 4 bar.
- Liquid level sensor detector to control glue volume, prevent glue from spill.
- Pre-melt gluing unit saving heating-up time, reducing the carbonization and vulcanization from burning up of glue resins, also binding better between tape and panel
- Easy to switch between two gluing units
- Option: PUR system



13. Auto glue pumping + 25kg glue basin×2

- Max 25kg capacity basin, glue would be pumped to pre-melt system's upper pot automatically as soon as lower than level sensor.



14. Pressure roller×2

- One pre-pressure roller with a diameter of 100mm plus 6 post rollers to press edge tape on panel surface firmly. Pressure regulating valve 1.5~2.5 bar.
- Glue scraping configured on all rollers, remove the glue stuck on roller.



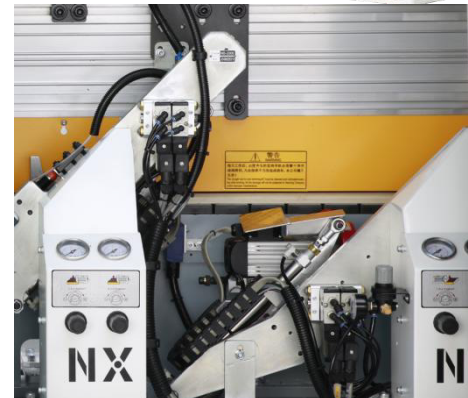
15. Auto lubrication system

- Lubrication system could meet the requirement of daily maintenance of linear guide rail, easy operation and save the possible costs.



16. Dual rails for end trimming

- Dual rail end trimming unit: front & back tape trimmings by two separated cutters mounted on rails, no waiting from only one single rail, hence higher productivity and stability. Min. panel interval 300mm
- The angle 45 degrees is able to adjust due to motor manual rotating device.
- 2 motors with power of 0.37kw, frequency of 200hz, rotating speed of 12000rpm/min; 2 cutters have a specification of 115*2.6*22*24Z with independent protective cover.



17. Two sets of fine trimming units with 2 position tool adjustment

Triple rollers structure nesting kit, friendly for pre-drilled boards. Fast switch between 2 tape thickness.

Fine trimming 1

- Motor: 0.75kw*2
Frequency: 200Hz;

Rotating speed:12000rpm/min

Circular arc radius R2 4Z

Fine trimming 2

- Motor: 0.55kw*2 Frequency: 200Hz; Rotating speed:12000rpm/min Circular arc radius R1 6Z



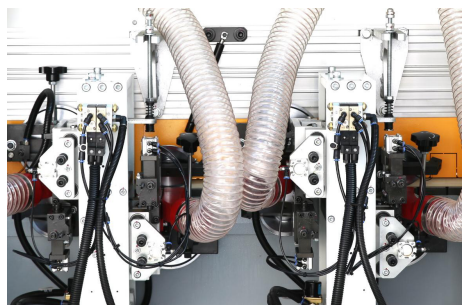
18. Corner trimming

- Designed to trim sharp corner on front, back and two straight edges so as to achieve R circular arc radius.
- Driven by 4 motors (power: 0.3kw; frequency: 200 Hz, rotating speed: 12000rpm/min).
- Planar linkage with 4 corner trimming tool R1.5 3Z



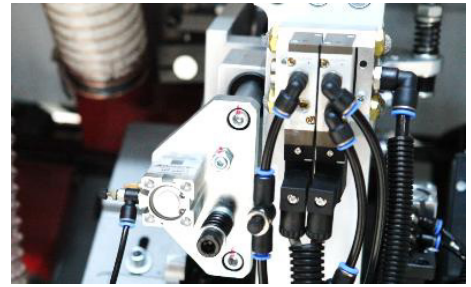
19. Two sets of scraping units with 2 position tool adjustment

- Triple rollers structure avoids possible damage on hinge hole on the edge.
- Two sets scraping units with scraping cutter in different circular arc radius. (One set with R2, the other with R1)
- 2 position pneumatic adjustment is designed for fast switch between two kinds of tape resulting shorter setting up time, stable quality, max convenience and higher productivity.



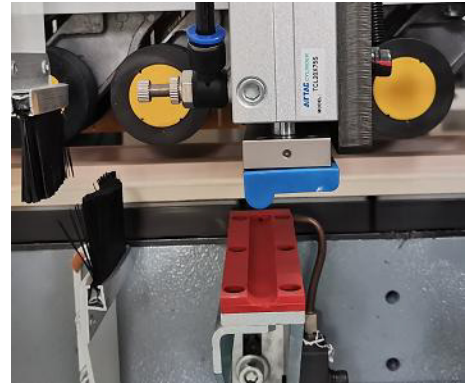
20. 2 position adjustable for different thickness by cylinders-fine trimming/scraping

- Fast switch between thin tape and thick tape due to adjustable 2 sets of each fine trimming units and scraping units, resulting shorter setting up time, stable quality, max convenience and higher productivity.



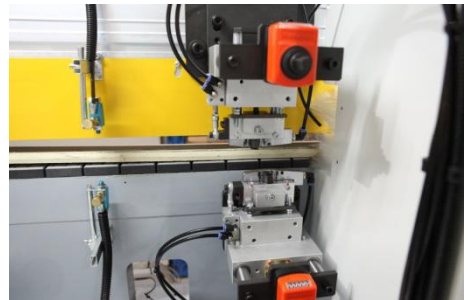
21. Off cut device

- Off cut device solve the tape silk threads from scrapping, as to prevent any problem later during flat scraping and buffing.



22. Pneumatic flat scraping

- Remove extra glue line for perfect banding effect.



23. Sprayer unit-Pink

- Pink Clean Agent to clean board surface for the perfect edge.
- Riepe



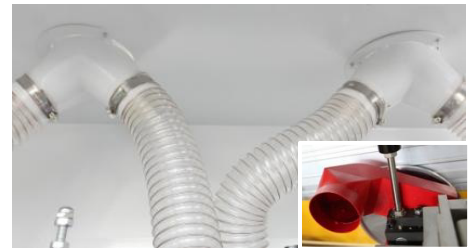
24. Two sets of oscillating Buffing

- 2 sets of Unique oscillating buffing for 2 color glue, preventing high wear & tear, offering longer life time.
- Driven by continuous current dynamo, more stably. 10
- Motor: 0.37kw*2



25. Dust collector

- ❑ Independent suction hood (φ125mm) fully covered on processing units, totally 8 pcs dust collectors provides excellent working condition, prevent any influence caused by scraps for longer service life.



26. Remote switch and indicator light

- ❑ A remote switch enables the operator to stop or start the machine anytime during the process that provides the max. convenience to adjust or test the machine.
- ❑ Operation indicating light, the operation status of the machine is available at a glance.



27. Safety device

Feeding protector and thickness detection

- ❑ Protector prevents any possible accidents and ensures safety of operators, automatic monitoring abnormal operation.
- ❑ Work piece thickness detection, if work piece thickness over the limited position, conveyor will stop at once to reduce machine damage.

Interval feeding detection system

- ❑ Keep work pieces in proper distance for max edge banding performance.

E-STOP

- ❑ To stop running at once, guarantee operator life safety.



28. Electric components

- PLC, input voltage, 3-380v, 50Hz (Standard). Frequency converter with motor braking function;
- Phase sequence protector;
- All the electrical components of facilities confirm to relevant national standard.
- Permitting to be operated under the temperature of 0-40°C.



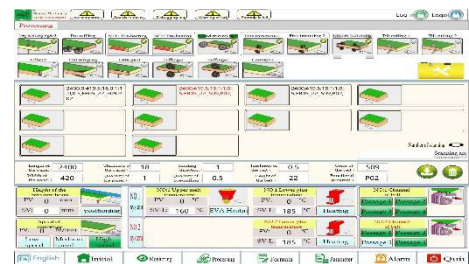
29. PC control

- PC control, it can identify label information;
- The label Scanning or manually edit can achieve “one click to start” which can improve production efficiency and reduce errors.



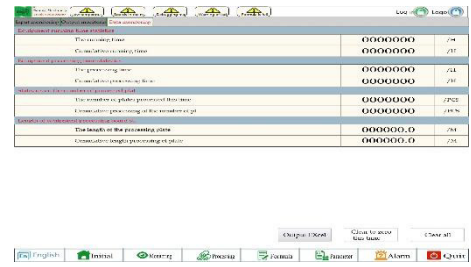
30. User-friendly interface

- Operation interface is intuitive and simple, available to control each component independently easy for testing and commission work.
- Up&down of pressure beam, edge tape changing, machine distance could be operated by just one button. System languages: English, simplified Chinese, and traditional Chinese.
- Format function, easy to set up;



31. Production report

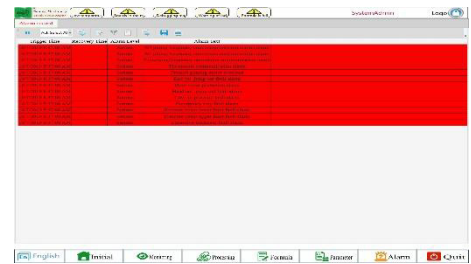
- Daily production included workpieces number and length is available at a glance.



Item Name	Quantity	Length
Production report	000000	7/4
Production report	000000	7/5
Production report	000000	7/6
Production report	000000	7/7
Production report	000000	7/8
Production report	000000	7/9
Production report	000000	7/10
Production report	000000	7/11
Production report	000000	7/12

32. Easy Trouble-shooting

- Alarm shows clear info, easier to find problem



33. Sample



Option

1. 2KG/20KG PUR device

- Temperature control system by touch screen control, evenly heating up, avoid carbonization;
- Special gear pump for evenly glue supplying
- Built-out independent suspending system of gear pump to facilitate the repairing and save time.



Technical Data

Panel length:	≥120 mm
Panel width:	≥80 mm
Panel thickness:	9-60 mm
Min. panel size	200×80mm (corner trimming)
Edge tape thickness:	0.4-3 mm
Feeding speed:	18/22/26 m/min
Power supply:	380 V; 50 Hz
Air pressure required:	0.7MPa
Operation system	PC control
Dust collector	Φ125mm×8
Control mode	Encoder
Total power:	42 Kw
Approx. weight:	6,110 kg
Overall dimension:	11,200*1,450*1,650 mm

*Thanks for your attention!

The company continuous to improve the product specifications and design details, the specifications are subject to change without notice. 240809