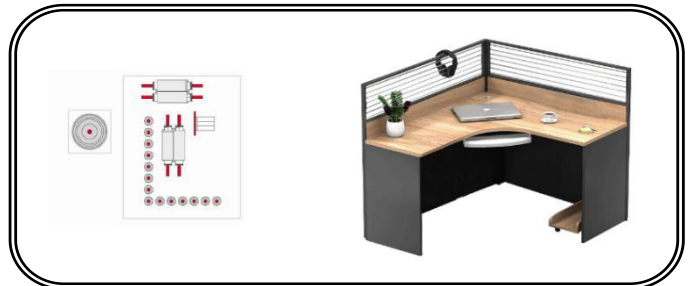


CNC Machining Center NCG6018

NichoMachines Machinery



Find more: www.nichomachines.com



3-year warranty*
ensuring no hassle
and unforeseen costs



Quick return on
investment



Low Total Cost of
Ownership



Ensuring low price
by sourcing cleverly
in large quantities

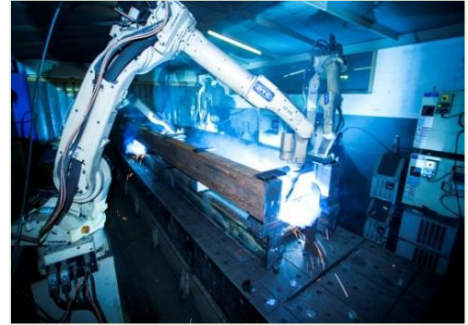
Description

CNC with pod and rail table NCG6018 is one of the machines must be used for the customized orders by furniture companies. This machine can drill from 5 sides and routing on top side in one process, 6000*1850mm table size is especially suitable for office table plate processing of 2 working stations alternatively processing making production higher efficient. Moving axis X, Y, Z and change of tools are controlled by servo motors. Machine is designed with an open port TPA system, easy to chase shapes of panels on drawing and their processing status, edit shapes, show data info of the order, and more functions. Optional C axis .

Details

1. Machine body

- Heavy duty bed structure machine body is welded with square tube and laser-cut steel plates by professional robots welding line, even welding marks and distance ensures high stability of body.
- Vibration and aging to release internal strength
- Parts and machine body are processing by advanced CNC machine for metal work, just one positioning to finish most processing work, hence guarantees processing accuracy and reduce the vibration in the process;



2. Quality control

- Advanced measuring equipment and strict QC system help to make sure the machines and parts are checked and certificated by very high standard.
- All the machines are delivered with Quality Certificate signed by QC specialist.



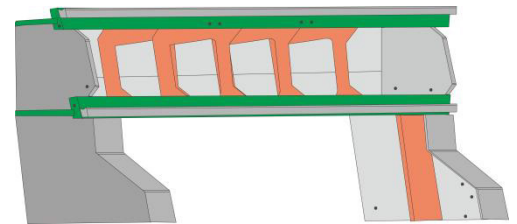
3. Professional assembly line

- Nanxing follow the SOP and set up the professional assembly lines. All the assembling is worked out by the experienced technicians that guarantee machine standardization and performance.



4. Gantry frame

- Gantry frame, reliable for high speed milling work and ensure high precision in the long term.
- Compact support ribs inside gantry ensure the higher strength and stability, that means higher machining quality and longer service life;
- All the machine bodies and gantries are through stress relief before installation.



5. Movement of each axis

X & Y direction

Long rack and pinion along X&Y direction improve accurate movement of the gantry, partly reducing the possible vibration in the process.



Z direction

- Z direction is especially important for precision of processing. Ball screw with fine screw threads gives the machine added precision in Z direction.



Servo Motor

- The accurate and stable movement of each axis is ensured by the high quality servo motors. X axis 1.8kw*2, Y axis 1.8kw; Z axis 1.3kw. W axis:1.3kw; C/P axis: 0.4kw Speed: X/Y/Z/W: 80/80/30/20



6. Automatic lubrication

- Grease main transmission components automatically so as to prevent machine components from aging thus reducing the maintenance work by operators.



7. Hiteco Main Spindle + drilling block

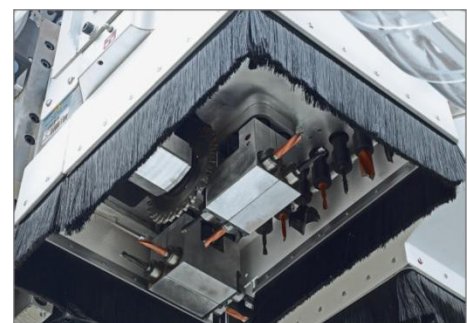
Powerful main spindle

- 12kw Italian powerful air-cooling ATC main spindle has self-air blowing function , max rotating speed up to 24000rpm/min, can work with 50mm thick panel.
- Coupler type HSK-63F making contact between tool holder and clamp closely, fix tightly, fast for ATC and suitable for high speed working.
- Max 200mm working height
- Extra air blowing nozzle on main spindle improve the dust collection performance.



Drilling block

- 14 vertical drills+8 horizontal drills+1 grooving saw blade; Independent dust cover.



Fully Cover

- Processing unit is fully covered by dust cover of good appearance for better working condition.



8. Automatic tool changer with 12 +8 slots

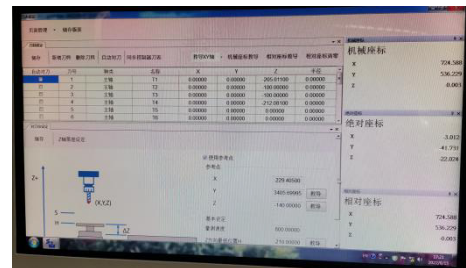
- Coupler type: HSK-63F;
- The automatic servo tool change magazine with 12-slots suitable for complicated process requirements, no need to change tool manually offers maximum operation convenience, save time.
- Additional 8 fixed on machine frame is designed for bigger tool or aggregates.

Tip: Tool couplers and aggregates are not included



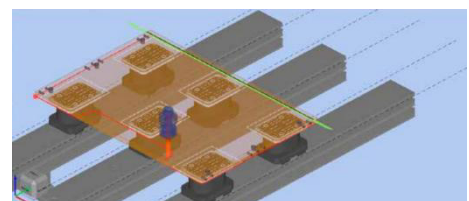
9. Tool setting gauge and locker

- Automatic tool setting is precise and fast which ensures machine continuous working without need of changing tool by hand, save time.
- Tool locker is used to put tool for the time being.



10. Rail working table 6000*1850mm size

- 8 sets of rails coupled with 4 suction pads lock panels tightly while processing. 32 fast switch suction pods, the position of rails is convenient to change on request.
- Rail structure equipped with 3 kinds of suction pads suitable for panels in different shape and size.
- Two working stations alternatively processing making production higher efficient.
- Suction pods' position is available on software



11. 2pcs vacuum pump

➤ 2pcs 7.5kw vacuum pumps with suction flow rate 250m³/h, pressure 0.5 kg/cm² for high-performance sorption on the table , thus panel could be fixed on the table firmly.



12. LED indicator

➤ LED tape lights helps operator to know where to place the pods and rails; Simplify your job;.



13. Positioning device for narrow panel

➤ Minimum Panel width even up to 50mm on the basis of a positioning device, which is special designed for narrow panels, available to be opened while narrow panel putting on the working table.



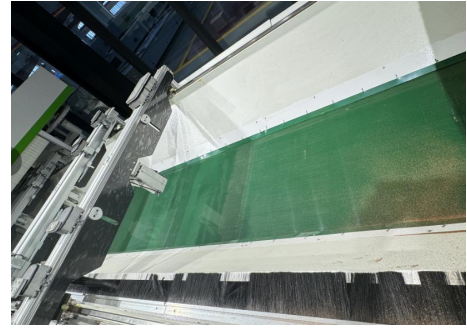
14. Positioning robs

➤ Positioning robs driven by cylinder at the end of each table rail rise to ensure the work piece is put in proper place for following processing, max. reduces the error.



15. Dust out-feed belt

- The belt below the rail table is able to transfer the chips and dust outside, easy to clean



16. Safety fence & Light barrier

- Machine is with safety fence and light curtain for safety
- Safety light barrier is divided into two areas due to dual working stations, it won't affect the normal processing of the other station when operator comes to put panel on one working station so as to ensure personal safety during the alternatively working on two working stations



17. Cable chain

- High-quality drag chain used to drag and protect electric wire and air tube during main spindle moving in X and Y direction. And keep electric wire and air tube in order.



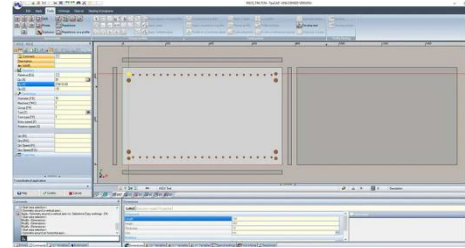
18. Hand controller and foot pedal

- Hand controller and foot switch make commissioning more convenient.



19. TPA control system

- User-friendly, provides stable performance, powerful functions and ease of use with friendly interface. Processing path is available at a glance (English and Chinese language are available)
- Open port equipped to link with various international nesting software making processing much optimized, under controlled, well managed, design intended, and data networking included for easy operation.



20. Electric equipment

Computer

- IPC with Windows operating system;
- DELL display;
- USB port



Independent control cabinet

- Electric components are of high quality and famous brand. Equipped with air conditioner to control the operating temperature for highest performance.
- Door with sealing strip avoids dust and chips.



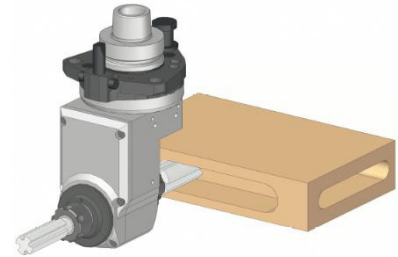
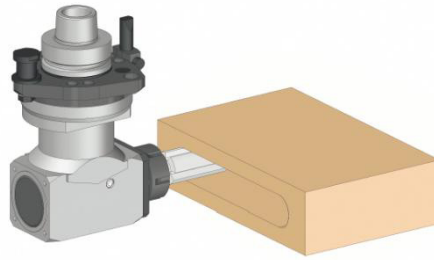
Air conditioner

- Machine is with air conditioner to ensure proper working temperature of electrical components for optimal performance and longer service life, very safe. Especially suitable for high-temperature zone.



Option

1. C axis + aggregate



Angular head (A axis is adjustable) One head 90° aggregate for lock hole (etc..choose according to processing requirement.)

Two heads 90° aggregate, suitable

Technical Data

Working range	X-axis: 6000 mm	Y-axis: 1850 mm
	Z-axis: 200 mm	
Working table	Table with 8 rails, each rail with 4pcs suction cups. Table size: 6000*1850mm	
Max. traveling speed	X-axis: 80 m/min	Y-axis: 80 m/min
	Z-axis: 30 m/min	
Board size	Thickness: 8-60mm	
	Width: 80-1850mm	
	Length: 250-6000mm	
Main spindle	Number of main spindle: 1	Rotating speed: 24,000 rpm
	Power: 12 kW	Tool holder: HSK-63F
	ATC with 12 disc+10 slots fixed magazine	Collet: ER32
Drilling unit	Power: 1.7 kW	Rotating speed: 4,000 rpm
	Vertical drills: 14	Horizontal drills (X) : 2 + 2
	Saw blade: 1	Horizontal drills (Y): 2 + 2
	Saw blade outer diameter: $\Phi 120$	Saw blade inner diameter: $\Phi 35$
Vacuum pump	Qty: 2	Suction flow rate: 250 m ³ /h
	Power: 7.5 kW	
Dust extraction	Outlet diameter: $\Phi 200$ mm	Speed required: 28 m/s
Air supply	Air pressure required: 7 kg/cm ²	
Power supply	Voltage: 380V, 3-phase	Frequency: 50 Hz
Total power	43 kW	
Overall dimension	L×W×H: 8070X3954X2750mm	
Net weight	Approx. 6,500 kg	

*Thanks for the attention!

The company continuous to improve the product specifications and design details, the specifications are subject to change without notice. 240827