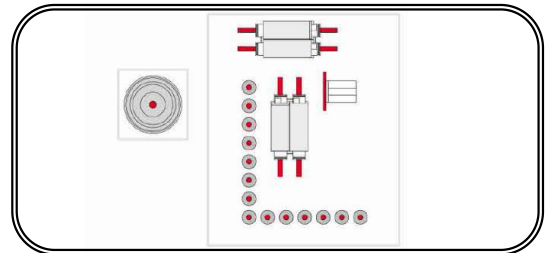


CNC Machining Center NCP3312Z2

NichoMachines Machinery



Find more: www.nichomachines.com



3-year warranty*
ensuring no hassle
and unforeseen costs



Quick return on
investment



Low Total Cost of
Ownership



Ensuring low price
by sourcing cleverly
in large quantities

Description

CNC with pod and rail table NCP3312Z2 is one of the machines must be used for the customized orders by furniture companies. This machine and the relevant furniture software can be linked without extra set up work, boring 5 sides and routing on top side in one process, also two working stations alternatively processing making production higher efficient. Moving axis X, Y, Z and change of tools are controlled by servo motors. Machine is using TPA system which integrates CAM inside, easy to program, and chase shapes of panels on drawing and their processing status, edit shapes, show data info of the order, and more functions.

Details

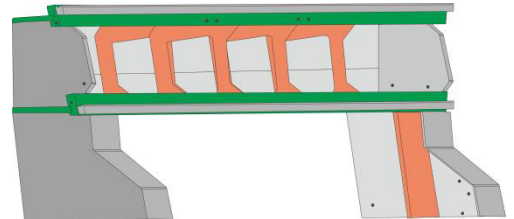
1. Machine body

- Heavy duty machine body of triangle support structure is welded with square tube and laser-cut steel plates, then through processing of advanced CNC machine for metal work, hence enhance the stability and strength, reduce the vibration in the process;
- Some casting parts used on the machine guarantees long service life without deforming.



2. Gantry

- Compact support ribs inside gantry ensure the higher strength and stability, that means higher machining quality and longer service life;
- All the machine bodies and gantries are through stress relief before installation.



3. Quality control

- Advanced measuring equipment and strict QC system help to make sure the machines and parts are checked and certificated by very high standard.
- All the machines are delivered with Quality Certificate signed by QC specialist.



4. Professional assembly line

- Assembly is final and important step for better machine performance. Nanxing's professional assembly lines from machine body to small electrical components were by experienced technicians that guarantee machine standardization and performance.



5. Movement of each axis

X & Y direction

Long rack and pinion along X&Y direction improve accurate movement of the gantry, partly reducing the possible vibration in the process.

Z direction

- Z direction is especially important for precision of processing. Ball screw with fine screw threads gives the machine added precision in Z direction.

Motor

- The accurate and stable movement of each axis is ensured by the high quality servo motors. X axis 3 kw, Y axis 2kw; Z axis 1kw.



6. Automatic lubrication

- Grease main transmission components automatically so as to prevent machine components from aging thus reducing the maintenance work by operators.



7. Drag chain

- High-quality drag chain used to drag and protect electric wire and air tube during main spindle moving in X and Y direction. And keep electric wire and air tube in order.



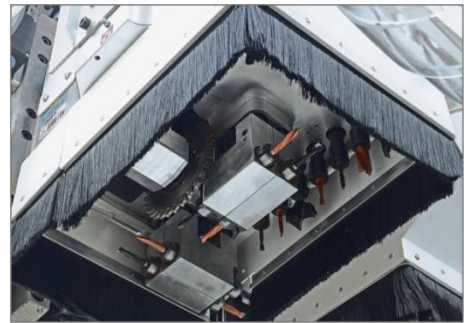
8. Powerful main spindle

- 12kw Hiteco air cooling spindle: powerful, precise and stable, max rotating speed up to 24000rpm/min
- Coupler type HSK-63F making contact between tool holder and clamp closely, fix tightly, fast for ATC



9. Machine processing

- Powerful imported main spindle 12kw, 24,000 rpm; HSK-63F
- 14 vertical drills+8 horizontal drills+1 grooving saw blade;
- Independent dust cover.



10. Automatic tool changer with 12 slots

- The automatic servo tool change magazine with 12-slots, no need to change tool manually, maximum operation convenience, saves labor.

Tip: Standard with 1pc tool coupler.



11. Rail working table

- Six sets of rails coupled with suction pads lock panels tightly while processing. 18 fast switch suction pods, the position of rails is convenient to change on request.
- Rail structure equipped with 3 kinds of suction pads suitable for panels in different shape and size.
- Two working stations alternatively processing making production higher efficient.



12. Positioning device for narrow panel

- Minimum Panel width even up to 50mm on the basis of a positioning device, which is special designed for narrow panels, available to be opened while narrow panel putting on the working table.



13. Positioning robs

- Positioning robs driven by cylinder at the end of each table rail rise to ensure the work piece is put in proper place for following processing.



14. LED indicator (option)

- LED tape lights helps operator to know where to place the pods and rails; Simplify your job;.



15. Safety light curtain and safety fence

- Safety light curtain is divided into two areas due to dual working stations, it won't affect the normal processing of the other station when operator comes to put panel on one working station so as to ensure personal safety during the alternatively working on two working stations.



16. Vacuum pump

- Power: 7.5 kW
- Suction flow rate: 250 m³/h
- Air cooling



17. Dust extraction

- 2 individual dust extractions of drilling unit and spindle for reducing the dust and chips effectively.

- Hose diameter: $\Phi 200$;
- Number of suction outlet: 1;
- Required suction speed: 28 m/s.



18. Tool setting gauge and locker

- The tool setting gauge gives the tool setting added speed and accuracy effectively.
- The tool locker makes change tools convenient.



19. Easy debugging with hand controller

- 14 gears hand wheel makes debugging more convenient.



20. Bar-code reader

- Read the panel processing information generated by furniture making software, Panel processing can be simply performed by scanning the Bar code, especially suitable for production line.



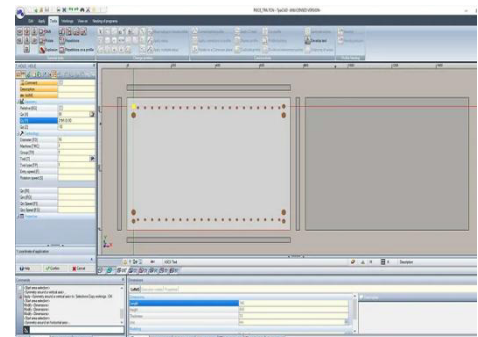
21. Control

Computer

- IPC with Windows operating system;
- DELL display;
- USB port
- Standard open port to take in software for smart production.

Control system and professional software

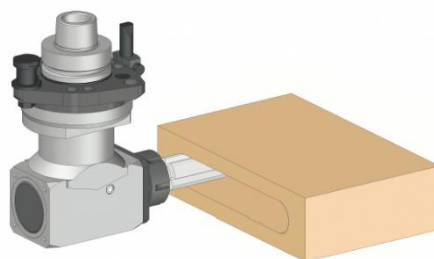
- Italian TPA control system provides stable performance, powerful functions and ease of use. easy to chase shapes of panels on drawing and their processing status, edit shapes, show data info of the order, and more functions. Multi-language and user-friendly



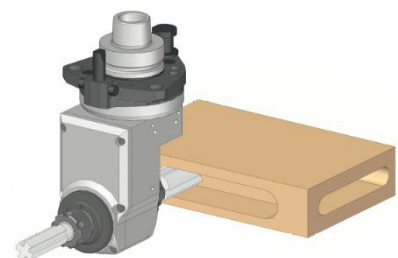
22. Option C axis



Angular head (A axis is adjustable)



One head 90°aggregate



Two heads 90°aggregate, suitable for lock

Technical Data

Working range	X-axis: 3300 mm	Y-axis: 1250 mm
	Z-axis: 170 mm	
Working table	Table with 6 rails, each rail with 4pcs suction cups. Table size: 3300*1250mm	
Max. traveling speed	X-axis: 80 m/min	Y-axis: 80 m/min
	Z-axis: 30 m/min	
Main spindle	Number of main spindle: 1	Rotating speed: 24,000 rpm
	Power: 12 kW	Tool holder: HSK-63F
	ATC with 12 slots	Collet: ER32
Drilling unit	Power: 1.7 kW	Rotating speed: 4,000 rpm
	Vertical drills: 14	Horizontal drills (X) : 2 + 2
	Saw blade: 1	Horizontal drills (Y): 2 + 2
	Saw blade outer diameter: Φ 120	Saw blade inner diameter: Φ 35
Vacuum pump	Power: 7.5 kW	Suction flow rate: 250 m ³ /h
	Suction pressure: 0.6 kg/cm ²	
Dust extraction	Outlet diameter: Φ 200 mm	Speed required: 28 m/s
Air supply	Air pressure required: 7 kg/cm ²	
Power supply	Voltage: 415V, 3-phase	Frequency: 50 Hz
	(with External transformer 415 to 380V)	
Total power	28 kW	
Overall dimension	L×W×H: 5,220× 2,600×2,620 mm	
Net weight	Approx. 4,800 kg	

*Thanks for the attention!

The company continuous to improve the product specifications and design details, the specifications are subject to change without notice. 230509